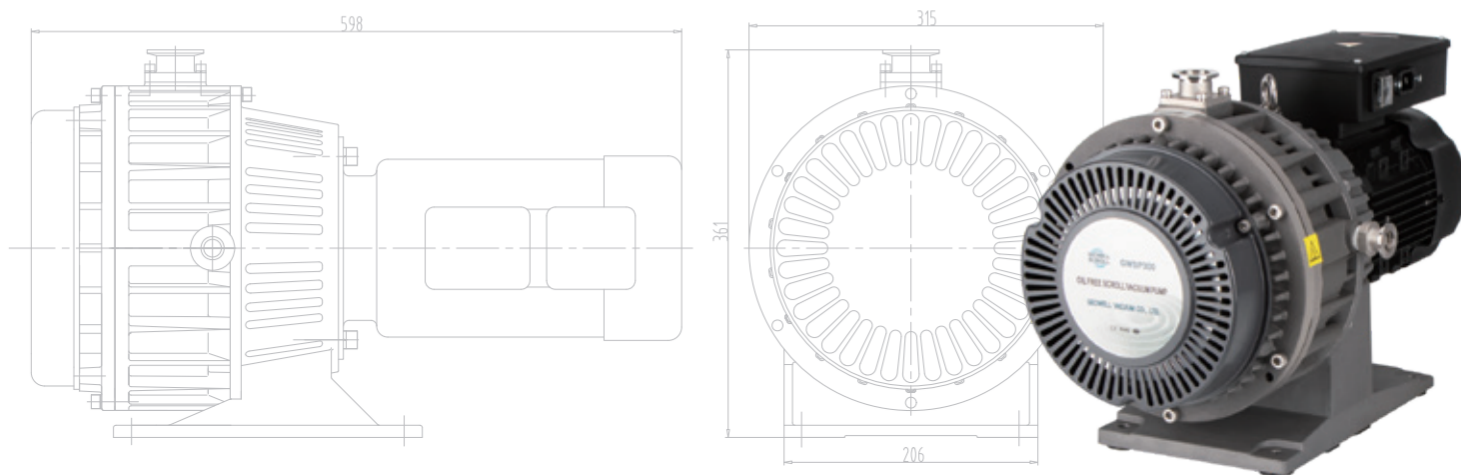


Premium oil free scroll vacuum pump manufacturer



GEOWELL VACUUM CO., LTD.
www.geowellscroll.com



CONTENTS

GWSP Oil free Scroll Vacuum Pump 01/02

GWSPB Oil free Scroll Vacuum Pump 03/04

GWSPS Oil free Scroll Vacuum Pump 05/06

GWMC Oil free Vacuum Unit 07

GWMS Oil free Ultrahigh Vacuum Unit 08

GWSPC Oil free Scroll Vacuum Compressor 09

GWT Foreline Filter 10

GWS Exhaust Silencer 10

GWMMK Major Maintenance Kit 11

GWTSK Tip Seal Kit 11

Geowell Global Footprint

Our users span across continents, covering over 60 countries and regions:

In North America : the United States, Canada, Mexico, Costa Rica;

In South America: Peru, Brazil, Chile, Colombia, and Ecuador;

In Asian: China, Hong Kong, Taiwan, Japan, Singapore, Thailand, Malaysia, Indonesia, Philippines, Vietnam, Sri Lanka, South Korea, North Korea, India, Pakistan, the United Arab Emirates, Saudi Arabia, Israel, Lebanon, Mongolia, and Afghanistan;

In European: Russia, Belarus, Ukraine, Serbia, Slovakia, Slovenia, Lithuania, Poland, the Czech Republic, Armenia, Spain, Hungary, Bulgaria, the United Kingdom, France, Germany, Denmark, Finland, the Netherlands, Sweden, Austria, Italy, Turkey, and Kazakhstan;

Oceania : Australia and New Zealand.



GWSP Oil free Scroll Vacuum Pump

Working principle

GWSP oil free scroll vacuum pump is constructed with a pump head kit, motor kit and bracket kit. There are three scroll plates, one orbiting and two fixed. The orbiting scroll plate is offset and orbiting against the fixed scroll plate with an offset of 180° to form several crescent-shaped pockets of different sizes. By means of a motor driven, the orbiting scroll plate is made to orbit about the fixed scroll plate, reducing the volume of the crescent-shaped pockets and compressing gas from outside towards the inside thereby pumping the gas from vacuum chamber.



Features & Benefits

- Create oil free vacuum
- Low vibration, low noise, and low power consumption.
- Compact size and lightweight design.
- No back streaming, leading to high product yield and cost-effectiveness.
- No oil ejection, ensuring contamination-free operation and environmental protection.
- Easy maintenance.

Specifications

Model			GWSP75	GWSP150	GWSP300	GWSP600	GWSP800	GWSP1000
Pumping Speed	60Hz	l/s	1.2	2.4	5.2	10.4	14.4	20.0
		l/min	72.0	144.0	312.0	624.0	864.0	1200.0
		m³/h	4.3	8.6	18.7	37.4	51.8	72.0
		cfm	2.5	5.1	11.0	22.0	30.5	42.4
	50Hz	l/s	1.1	2.0	4.3	8.7	12.0	16.6
		l/min	66.0	120.0	258.0	522.0	720.0	996.0
		m³/h	4.0	7.2	15.5	31.3	43.2	59.8
		cfm	2.3	4.2	9.1	18.4	25.4	35.2
Ultimate Pressure		Torr	≤6.0*10 ⁻²	≤3.8*10 ⁻²	≤2.0*10 ⁻²	≤7.5*10 ⁻³	≤7.5*10 ⁻³	≤7.5*10 ⁻³
		psi	≤1.2*10 ⁻³	≤7.2*10 ⁻⁴	≤3.8*10 ⁻⁴	≤1.5*10 ⁻⁴	≤1.5*10 ⁻⁴	≤1.5*10 ⁻⁴
		mbar	≤8.0*10 ⁻²	≤5.0*10 ⁻²	≤2.6*10 ⁻²	≤1.0*10 ⁻²	≤1.0*10 ⁻²	≤1.0*10 ⁻²
		Pa	≤8	≤5	≤2.6	≤1	≤1	≤1
Noise Level		dB(A)	≤54	≤57	≤63	≤63	≤65	≤67
Leakage		mbar-l/s	1*10 ⁻⁶					
Max.Inlet/Exhaust Pressure		atm	1 / 1.3					
Ambient Operation Temp.		°F	41~104					
Motor 1 phase	Power	kW	0.2	0.55		0.75	1.1	--
	Voltage	V	220 (50/60Hz)	100/115/200/230 (50/60Hz) 100-240 (50/60Hz)		230 (50/60Hz) 110 (60Hz)	230 (50/60Hz)	--
	Speed	rpm	1725(60Hz), 1425(50Hz)					--
	Plug		North America, Europe, UK, Ireland, India					--
Motor 3 phase	Power	kW	--	0.55		0.75	1.1	1.5
	Voltage	V	--	200-240 (50/60Hz) 380-415 (50Hz) 380-460 (60Hz)			220-240 (50/60Hz) 380-415 (50Hz) 380-460 (60Hz)	200-240 (50/60Hz) 380-415 (50Hz) 380-460 (60Hz)
	Speed	rpm	--	1425 (50Hz) , 1725 (60Hz)				
	Inlet/Exhaust Flange			KF25/KF25			KF40/KF25	
Dimensions		inch	13.1*8.9*10.1	18.1*10.4*11.2	19.6*12.1*13.2	20.2*12.8*14.0	22.2*14.5*15.6	22.7*17.9*16.0
		mm	332*225*257	461*263*284	498*307*335	512*326*355	565*369*397	577*454*407
Weight		lbs	33	46	62	79	88	119
		kg	15	21	28	36	40	54
Cooling Type			Air cooled					
Others			With air flush					

Safety Precautions

The GWSP series oil free scroll vacuum pumps are suitable for clean processes only. Do not pump toxic, explosive, flammable or corrosive substances or substances which contain chemicals, solvents or particles. GEOWELL will not perform maintenance work on pumps which have used special gases or other hazardous substances. Be sure the inlet gas temperature must be lower than 122 °F.

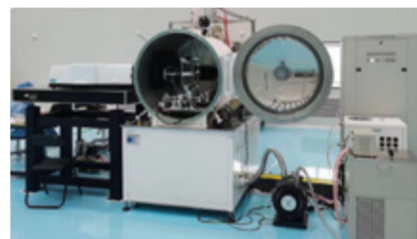
Applications



Analytical Testing Instruments



Semiconductor Industry



Materials Process Industry



Medical Equipment Industry



Food and Pharmaceutical Industry



New Energy Industry



Space science research

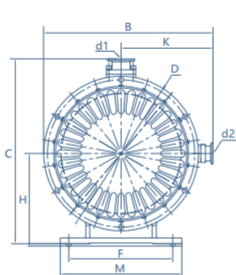
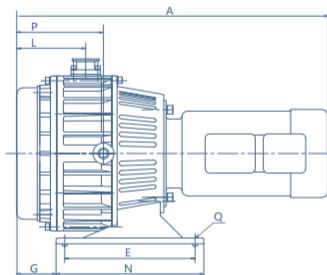


Cutting-Edge Scientific Research

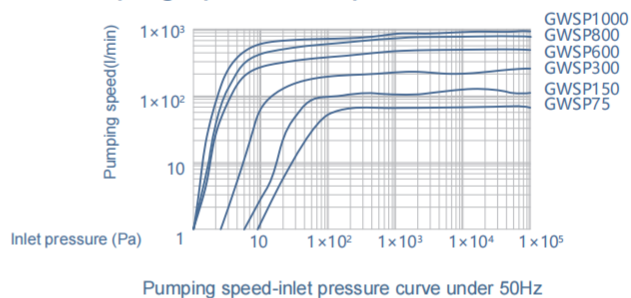


Vacuum Equipment Industry

Dimensions



Pumping speed-inlet pressure curve



Model	A	B	C	D	E	F	G	H	K	L	M	N	P	Q	d1	d2
GWSP75	332	225	257	Ø185	174	101	61	135	125	87	137	210	103	Ø8	KF25	KF25
GWSP150	461	263	284	Ø220	214	119	85	145	137	108	155	250	54	Ø9	KF25	KF25
GWSP300	498	307	335	Ø262	252	156	86	176	162	115	192	288	148	Ø9	KF25	KF25
GWSP600	512	326	355	Ø292	252	160	98	181	180	125	206	288	160	Ø12	KF40	KF25
GWSP800	565	369	397	Ø336	267	184	117	199	201	138	224	303	169	Ø12	KF40	KF25
GWSP1000	577	454	407	Ø357	267	184	126	199	232	138	224	303	122	Ø12	KF40	KF25

GWSPB Oil free Scroll Vacuum Pump

Working principle

GWSPB oil free scroll vacuum pump is constructed with a pump head kit, motor kit and bracket kit. There are two scroll plates, one orbiting and the other fixed. The orbiting scroll plate is offset and orbiting against the fixed scroll plate with an offset of 180° to form several crescent-shaped pockets of different sizes. By means of a motor driven, the orbiting scroll plate is made to orbit about the fixed scroll plate, reducing the volume of the crescent-shaped pockets and compressing gas from outside towards the inside thereby pumping the gas from vacuum chamber.



Features & Benefits

- No moving parts (like bearings) in the gas path for 100% oil-free operation.
- Low vibration, low noise, and low power consumption.
- Compact size and lightweight design.
- No back streaming, leading to high product yield and cost-effectiveness.
- No oil ejection, ensuring contamination-free operation and environmental protection.
- Simple single-scroll mechanism for easy maintenance.

Specifications

Model			GWSPB75	GWSPB150	GWSPB300	GWSPB600
Pumping Speed	60Hz	l/s	1.3	2.6	4.9	9.4
		l/min	78.0	156.0	294.0	564.0
		m³/h	4.7	9.4	17.6	33.8
		cfm	2.8	5.5	10.4	19.9
	50Hz	l/s	1.1	2.2	4.1	7.8
		l/min	66	132	246	468
		m³/h	4.0	7.9	14.8	28.1
		cfm	2.3	4.7	8.7	16.5
Ultimate Pressure		Torr	≤1.5*10 ⁻²	≤7.5*10 ⁻³	≤7.5*10 ⁻³	≤7.5*10 ⁻³
		psi	≤2.9*10 ⁻⁴	≤1.5*10 ⁻⁴	≤1.5*10 ⁻⁴	≤1.5*10 ⁻⁴
		mbar	≤2.0*10 ⁻²	≤1.0*10 ⁻²	≤1.0*10 ⁻²	≤1.0*10 ⁻²
		Pa	≤2	≤1	≤1	≤1
Noise Level		dB(A)	≤50	≤50	≤50	≤50
Leakage		mbar-l/s	1*10 ⁻⁶			
Max.Inlet/Exhaust Pressure		atm	1/1.3			
Ambient Operation Temp.		°F	41~104			
Inlet/Exhaust Flange			KF25/KF25			KF40/KF25
Pumping Speed	Power	kW	0.55			0.75
	Voltage	V	100/115/200/230 (50/60Hz), 100-240 (50/60Hz)			
	Speed	rpm	1425(50Hz), 1725(60Hz)			
	Plug		North America, Europe, UK, Ireland, India			
Dimensions		inch	15.1*9.3*11.4	15.6*9.3*11.4	15.9*10.5*12.0	16.2*10.5*12.0
		mm	383*236*290	395*236*290	403*267*305	412*267*305
Weight		lbs	35	40	55	57
		kg	16	18	25	26
Cooling Type			Air cooled			
Others			With air flush			

Safety Precautions

Be sure the inlet gas temperature must be lower than 122 °F.

Applications



Analytical Testing Instruments



Semiconductor Industry



Materials Process Industry



Medical Equipment Industry



Food and Pharmaceutical Industry



New Energy Industry



Space science research

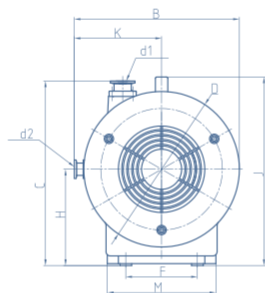
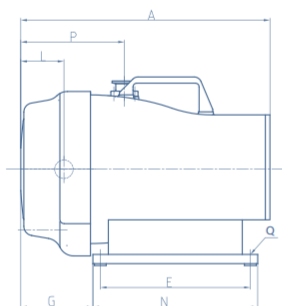


Cutting-Edge Scientific Research

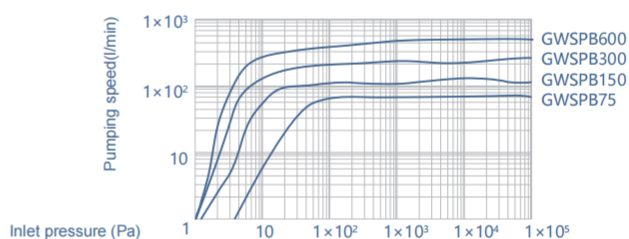


Vacuum Equipment Industry

Dimensions



Pumping speed-inlet pressure curve



Pumping speed-inlet pressure curve under 50Hz

Model	A	B	C	D	E	F	G	H	J	K	L	M	N	P	Q	d1	d2
GWSPB75	383	236	290	Ø221	245	116	108	157	284	126	70	170	269	176	Ø7	KF25	KF25
GWSPB150	395	236	290	Ø221	245	116	108	157	284	126	70	170	269	176	Ø7	KF25	KF25
GWSPB300	403	267	305	Ø252	243	116	167	157	299	141	70	176	269	168	Ø9	KF25	KF25
GWSPB600	412	267	305	Ø252	243	116	167	157	299	141	70	176	269	168	Ø12	KF40	KF25

GWSPS Oil free Scroll Vacuum Pump

Working principle

GWSPS oil free scroll vacuum pump is constructed with a pump head kit, motor kit and bracket kit. There are two scroll plates, one orbiting and the other fixed. The orbiting scroll plate is offset and orbiting against the fixed scroll plate with an offset of 180° to form several crescent-shaped pockets of different sizes. By means of a motor driven, the orbiting scroll plate is made to orbit about the fixed scroll plate, reducing the volume of the crescent-shaped pockets and compressing gas from outside towards the inside thereby pumping the gas from vacuum chamber.



Features & Benefits

- No moving parts (like bearings) in the gas path for 100% oil-free operation.
- Low vibration, low noise, and low power consumption.
- Compact size and lightweight design.
- No back streaming, leading to high product yield and cost-effectiveness.
- No oil ejection, ensuring contamination-free operation and environmental protection.
- Simple single-scroll mechanism for easy maintenance.

Specifications

Model			GWSPS75	GWSPS150	GWSPS300	GWSPS500	GWSPS900	
Pumping Speed	60Hz	l/s	1.2	3.1	5.3	8.1	13.9	
		l/min	72.0	186.0	318.0	486.0	834.0	
		m³/h	4.3	11.1	19.1	29.1	50.0	
		cfm	2.5	6.6	11.2	17.1	30.0	
	50Hz	l/s	1.0	2.6	4.4	6.7	11.6	
		l/min	60.0	156.0	264.0	402.0	696.0	
		m³/h	3.6	9.4	15.8	24.0	41.8	
		cfm	2.1	5.5	9.3	14.2	24.6	
Ultimate Pressure		Torr	≤1.1*10 ⁻¹	≤7.5*10 ⁻²	≤6.0*10 ⁻²	≤3.7*10 ⁻²	≤1.5	
		psi	≤2.2*10 ⁻³	≤1.5*10 ⁻³	≤1.2*10 ⁻³	≤7.3*10 ⁻⁴	≤2.9*10 ⁻²	
		mbar	≤1.5*10 ⁻¹	≤1.0*10 ⁻¹	≤8.0*10 ⁻²	≤5.0*10 ⁻²	≤2.0	
		Pa	≤15	≤10	≤8	≤5	≤200	
Noise Level	dB(A)	≤57	≤57	≤63	≤63	≤67		
Leakage	mbar·l/s	1*10 ⁻⁶						
Max.Inlet/Exhaust Pressure	atm	1 / 1.3						
Ambient Operation Temp.	°F	41~104						
Power	kW	0.55				0.75	--	
Motor 1 phase	Voltage	V	100/115/200/230 (50/60Hz)				230 (50/60Hz) 110 (60Hz)	--
	Speed	rpm	1425 (50Hz) , 1725 (60Hz)					--
	Plug		North America, Europe, UK, Ireland, India					--
Motor 3 phase	Power	kW	0.55			0.75	1.1	
	Voltage	V	200-240 (50/60Hz)				220-240 (50/60Hz)	
			380-415 (50Hz)				380-415 (50Hz)	
			380-460 (60Hz)				380-460 (60Hz)	
Speed	rpm	1725 (60Hz), 1425 (50Hz)						
Inlet/Exhaust Flange		KF25/KF25				KF40/KF25		
Dimensions	inch	19.8*9.4*11.3	19.8*9.4*11.3	20.7*10.7*12.4	22.8*12.4*14.0	22.8*12.4*14.0		
	mm	502*238*288	502*238*288	526*271*315	578*315*355	578*315*355		
Weight	lbs	49	49	71	84	90		
	kg	22	22	32	38	41		
Cooling Type		Air cooled						

Safety Precautions

Be sure the inlet gas temperature must be lower than 122 °F.

Applications



Analytical Testing Instruments



Semiconductor Industry



Materials Process Industry



Medical Equipment Industry



Food and Pharmaceutical Industry



New Energy Industry



Space science research

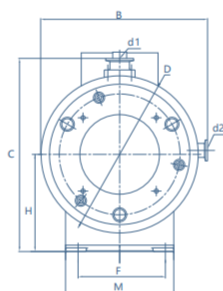
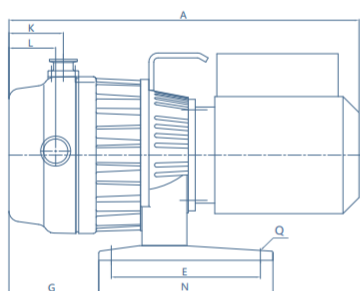


Cutting-Edge Scientific Research

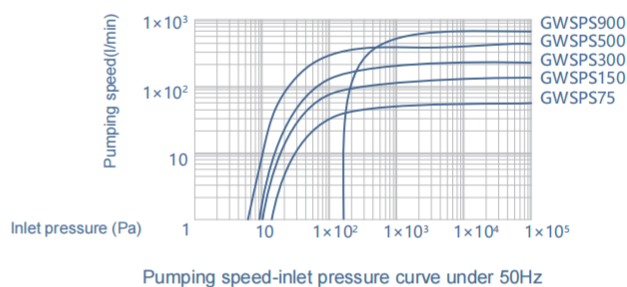


Vacuum Equipment Industry

Dimensions



Pumping speed-inlet pressure curve



Model	A	B	C	D	E	F	G	H	K	L	M	N	Q	d1	d2
GWSPS75	502	238	288	Ø225	214	125	129	151	78	67	155	250	Ø9	KF25	KF25
GWSPS150	502	238	288	Ø225	214	125	129	151	78	67	155	250	Ø9	KF25	KF25
GWSPS300	526	271	315	Ø254	252	156	133	173	95	85	192	288	Ø9	KF25	KF25
GWSPS500	578	315	355	Ø299	252	164	148	172	134	85	204	288	Ø12	KF40	KF25
GWSPS900	578	315	355	Ø299	252	164	148	172	134	85	204	288	Ø12	KF40	KF25

Oil free Vacuum Unit

Constructions

The GWMC series oil free vacuum unit combines oil free scroll pump, vacuum gauge, and mobile cart to provide oil free vacuum.

Features & Benefits

- No moving parts (like bearings) in the gas path for 100% oil-free operation.
- Low vibration, low noise, and low power consumption.
- Compact size and lightweight design.
- No back streaming, leading to high product yield and cost-effectiveness.
- No oil ejection, ensuring contamination-free operation and environmental protection.
- Simple single-scroll mechanism for easy maintenance.
- Real-time pressure monitoring.
- Enhanced portability.



Specifications

Model			GWMC75	GWMC150	GWMC300	GWMC600
Pumping Speed	l/s		1.1	2.2	4.1	7.8
	l/min		66.0	132.0	246.0	468.0
	m ³ /h		4.0	7.9	14.8	28.1
	cfm		2.3	4.7	8.7	16.5
Ultimate Pressure	Torr		$\leq 1.5 \times 10^{-2}$	$\leq 7.5 \times 10^{-3}$	$\leq 7.5 \times 10^{-3}$	$\leq 7.5 \times 10^{-3}$
	psi		$\leq 2.9 \times 10^{-4}$	$\leq 1.5 \times 10^{-4}$	$\leq 1.5 \times 10^{-4}$	$\leq 1.5 \times 10^{-4}$
	mbar		$\leq 2.0 \times 10^{-2}$	$\leq 1.0 \times 10^{-2}$	$\leq 1.0 \times 10^{-2}$	$\leq 1.0 \times 10^{-2}$
	Pa		≤ 2	≤ 1	≤ 1	≤ 1
Noise Level	dB(A)		≤ 50	≤ 50	≤ 50	≤ 50
Leakage	mbar-l/s		1×10^{-6}			
Max.Inlet/Exhaust Pressure	atm		1/1.3			
Ambient Operation Temp.	°F		41~104			
Inlet/Exhaust Flange			KF25/KF25			KF40/KF25
Motor 1 phase	Power	kW	0.55			0.75
	Voltage	V	100/150/200/230 (50/60Hz)			
	Speed	rpm	100-240 (50/60Hz)			
	Plug		1425 (50Hz), 1725 (60Hz)			
Vacuum Gauge	Range	Pa	North America, Europe, UK, Ireland, India			
Overall Dimensions	1 phase	mm	$1.0 \times 10^5 \sim 1.0 \times 10^{-1}$			
Overall Weight	1 phase	kg	583*430*873	583*430*873	583*430*873	583*430*873
Cooling Type			Air cooled			
Others			With air flush			

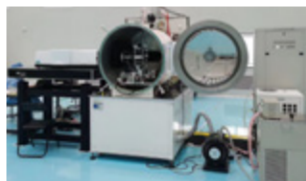
Applications



Analytical Testing Instruments



Semiconductor Industry



Materials Process Industry



Medical Equipment Industry



Food and Pharmaceutical Industry



New Energy Industry



Space science research



Cutting-Edge Scientific Research

GWMS Oil free Ultrahigh Vacuum Unit

Working principle

GWMS oil free ultrahigh vacuum unit is combined turbo molecular pump, oil free scroll vacuum pump, composite vacuum gauge and measurement hood in an integrated unit for oil free ultrahigh vacuum pumping.

Features & Benefits

- Air cooled and ready for operation.
- Compact construction and cost-effective.
- Integrated control unit.



Specifications

Model		GWMS100/150	GWMS300/150	GWMS650/300	GWMS1200/600
Main pump-turbomolecular pump		GWFB-110	GWFB-300	GWFB-650	GWFB-1200
Backing pump-scroll pump		GWSP150	GWSP150	GWSP300	GWSP600
Pumping Speed Main pump at 50Hz	l/s	110	300	650	1200
	m ³ /h	3.96*10 ²	1.08*10 ³	2.16*10 ³	4.32*10 ³
	cfm	2.20*10 ²	6.36*10 ²	1.06*10 ³	2.54*10 ³
Pumping Speed Backing pump at 50Hz	l/s	2.0	2.0	4.3	8.7
	m ³ /h	7.2	7.2	15.5	31.3
	cfm	4.2	4.2	9.1	18.4
Ultimate Pressure	Pa	5.00*10 ⁻⁵	2.00*10 ⁻⁵	2.00*10 ⁻⁵	2.00*10 ⁻⁵
	Torr	3.75*10 ⁻⁷	1.50*10 ⁻⁷	1.50*10 ⁻⁷	1.50*10 ⁻⁷
	psi	7.25*10 ⁻⁹	2.90*10 ⁻⁹	2.90*10 ⁻⁹	2.90*10 ⁻⁹
Power Source Type		1 phase/ 3 phase, 220V/ 380V, 50Hz/ 60Hz			
Inlet Flange		CF100/ISO-K100	CF100/ISO-K100	CF150/ISO-K160	CF200/ISO-K200
Foreline Flange		KF25	KF25	KF25	KF40
Exhaust Flange		KF25	KF25	KF25	KF25
Noise Level		dB(A)	≤57	≤57	≤63
Dimensions	inch	19.7*20.1*33.1	27.2*20.7*21.7	33.9*30.6*33.5	33.9*30.6*33.5
	mm	500*510*840	690*526*550	860*776*850	860*776*850
Weight	lbs	119	150	342	360
	kg	54	68	155	163
Ambient Temp		°F	41~104		
Cooling Type			Air cooled		

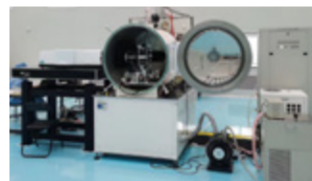
Applications



Analytical Testing Instruments



Semiconductor Industry



Materials Process Industry



Medical Equipment Industry



Food and Pharmaceutical Industry



New Energy Industry



Space science research



Cutting-Edge Scientific Research

GWSPC Oil free Scroll Vacuum Compressor

Working principle

GWSPC oil free scroll vacuum compressor is constructed with a compressor head kit, motor kit, and bracket kit. There are three scroll plates, one orbiting and two fixed. By means of a motor driven, the orbiting scroll plate is made to orbit about the fixed scroll plate, reducing the volume of the crescent-shaped pockets and compressing gas from outside towards the inside thereby pumping the gas from vacuum chamber.

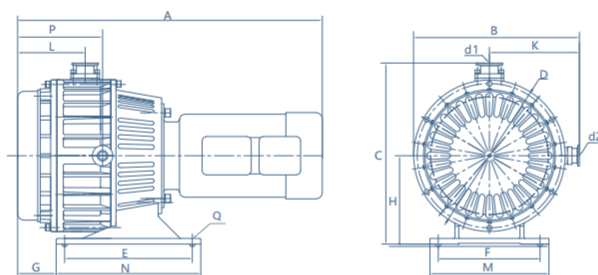
The gas is pumped from the inlet port and discharged through the exhaust port, completing the cycle of intake, compression, and exhaust. It is suitable for the recovery and recycling of specialized gases such as SF₆, helium, argon, and other rare gases.



Specifications

Model			GWSPC75	GWSPC150	GWSPC300	GWSPC600	GWSPC800	GWSPC1000
Pumping Speed	60Hz	l/s	1.2	2.4	5.1	10.4	14.4	19.9
		m³/h	4.3	8.6	18.4	37.4	51.8	71.6
		cfm	2.5	5.1	10.8	22	30.5	42.2
	50Hz	l/s	1.0	2.0	4.3	8.7	12.0	16.6
		m³/h	3.6	7.2	15.5	31.3	43.2	59.8
		cfm	2.1	4.2	9.1	18.4	25.4	35.2
Ultimate Pressure		mbar	≤3.0*10 ⁻¹	≤3.0*10 ⁻¹	≤2.0*10 ⁻¹	≤1.0*10 ⁻¹	≤1.0*10 ⁻¹	≤1.0*10 ⁻¹
		Torr	≤2.3*10 ⁻¹	≤2.3*10 ⁻¹	≤1.5*10 ⁻¹	≤7.5*10 ⁻²	≤7.5*10 ⁻²	≤7.5*10 ⁻²
Noise Level		dB(A)	≤57	≤57	≤63	≤63	≤63	≤67
Max.Inlet/Exhaust Pressure		atm	1/3					
Ambient Operation Temp.		°F	41~104					
Motor 3 phase	Power	kW	0.37	0.55	1.5	2.2	3.7	3.7
	Voltage	V	220-240 (50/60Hz) 380-415 (50Hz) 440-460 (60Hz)	200-240 (50/60Hz), 380-415 (50Hz), 380-460 (60Hz)				
	Speed	rpm	1725(60Hz), 1425(50Hz)					
Inlet/Exhaust Flange			KF25/KF25			KF40/KF25		
Dimensions		inch	17.7*10.0*11.2	17.9*10.0*11.2	21.3*11.6*13.2	23.7*12.8*14.0	24.9*15.5*16.0	24.9*15.5*16.0
		mm	449*253*284	455*255*284	541*295*335	601*326*355	624*393*407	633*393*407
Weight		lbs	46	49	86	117	141	141
		kg	21	22	39	53	64	64
Cooling Type			Air cooled					

Dimensions



Model	A	B	C	D	E	F	G	H	K	L	M	N	P	Q	d1	d2
GWSPC75	449	253	284	Ø220	214	119	80	151	135	108	155	250	50	Ø9	KF25	KF25
GWSPC150	455	255	284	Ø220	214	119	91	145	141	106	155	250	132	Ø9	KF25	KF25
GWSPC300	541	295	335	Ø262	252	156	90	176	164	119	192	288	152	Ø9	KF25	KF25
GWSPC600	601	326	355	Ø292	302	160	102	181	180	129	206	338	164	Ø12	KF40	KF25
GWSPC800	633	393	407	Ø357	302	160	118	199	215	140	206	338	67/180	Ø12	KF40	KF25
GWSPC1000	633	393	407	Ø357	302	160	118	199	215	140	206	338	67/180	Ø12	KF40	KF25

GWT Foreline Filter

Specifications

Model		GWT25	GWT40
Operating Pressure	Pa	$1\sim 10^{-5}$	$1\sim 10^{-5}$
Efficiency	%	≥ 99	≥ 99
Particle Size Filtered	μm	$\geq 2\sim 5$	$\geq 2\sim 5$
Filter Element		Paper, or polyester	Paper, or polyester
Inlet/Exhaust Flange		KF25/KF25	KF40/KF40
Weight	lbs	2.98	5.41
	kg	1.35	2.45

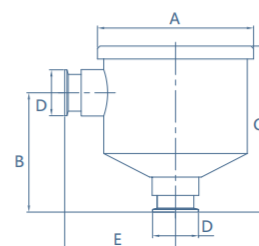


Applications

Coating, pharmaceutical, food, ceramic and glass, vacuum furnace, vacuum packing.

Dimensions

Model		A	B	C	D	E
GWT25	inch	Ø5.8	3.8	5.4	KF25	4.3
	mm	Ø147	96	138	KF25	109
GWT40	inch	Ø7.4	5.6	7.8	KF40	5.2
	mm	Ø187	142	199	KF40	132



GWS Exhaust Silencer

Specifications

Model		GWS16	GWS25
Operating Pressure	Pa	$1\sim 10^{-5}$	$1\sim 10^{-5}$
Efficiency	%	≥ 99	≥ 99
Particle Size Filtered	μm	$\geq 2\sim 5$	$\geq 2\sim 5$
Filter Element		Paper, or polyester	Paper, or polyester
Inlet Flange		KF16	KF25
Weight	lbs	0.55	0.88
	kg	0.25	0.40

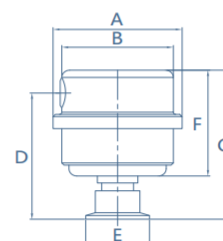


Applications

Coating, pharmaceutical, food, ceramic and glass, vacuum furnace, vacuum packing.

Dimensions

Model		A	B	C	D	E	F
GWS16	inch	Ø2.5	Ø2.1	3.7	3.2	KF16	2.2
	mm	Ø63	Ø53	94	82	KF16	55
GWS25	inch	Ø3.2	Ø2.8	4.1	3.4	KF25	2.9
	mm	Ø81	Ø70	103	87	KF25	74



GWMMK Major Maintenance Kit

Constructions

The GWMMK major maintenance kit is constructed with tip seal kit, crank pin, and bearings for GWSP oil free scroll vacuum pump's major maintenance.

Features & Benefits

- Super wear proof.
- High temperature resistance.
- Excellent abrasion resistance.
- Working life 1~2 year.
- Clean and quiet.
- Improve limited vacuum.
- Decrease noise.
- 24 hours per day continues operation.



Specifications

Model	Unit	GWMMK75	GWMMK150	GWMMK300	GWMMK600	GWMMK800	GWMMK1000
Working temperature	°F	-4~194					
Working pressure	Pa	$1 \times 10^{-1} \sim 10^6$					
Working life	Hour	8,000~16,000					
Weight	lbs	0.9	0.9	1.1	1.1	1.1	2.1
	kg	0.4	0.4	0.5	0.5	0.5	0.95
Product suited		GWSP75	GWSP150	GWSP300	GWSP600	GWSP800	GWSP1000
		GWSPC75	GWSPC150	GWSPC300	GWSPC600	GWSPC800	GWSPC1000

Applications

Used for the major maintenance of oil free scroll vacuum pumps and oil free scroll vacuum compressors.

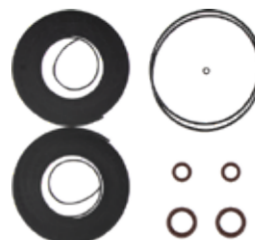
GWTSK Tip Seal Kit

Constructions

The GWTSK tip seal kit is constructed with tip seal kit, o ring, and shaft seals for GWSP oil free scroll vacuum pump's tip seal exchange.

Features & Benefits

- Super wear proof.
- High temperature resistance.
- Excellent abrasion resistance.
- Working life 1~2 year.
- Clean and quiet.
- Improve limited vacuum.
- Decrease noise.
- 24 hours per day continues operation.



Specifications

Model	Unit	GWTSK75	GWTSK150	GWTSK300	GWTSK600	GWTSK800	GWTSK1000
Working temperature	°F	-4~194					
Working pressure	Pa	$1 \times 10^{-1} \sim 10^6$					
Working life	Hour	8,000~16,000					
Weight	lbs	0.2	0.3	0.3	0.3	0.3	0.3
	kg	0.1	0.15	0.15	0.15	0.15	0.15
Product suited		GWSP75	GWSP150	GWSP300	GWSP600	GWSP800	GWSP1000
		GWSPC75	GWSPC150	GWSPC300	GWSPC600	GWSPC800	GWSPC1000

Applications

Used for the tip seal exchange of oil free scroll vacuum pumps and oil free scroll vacuum compressors.

Why Choose GEOWELL Oil free Scroll Vacuum Pump?

GEOWELL is a leading professional manufacturer of oil free scroll vacuum pumps with over 20 years of field experience, the longest performance hours and largest sales in China, GEOWELL's oil free scroll vacuum pumps are the premium choice for clean pumping technology.

Oil free scroll vacuum pump, also refer to as vortex pump, scroll pump, dry pump, dry scroll pump, oil free scroll pump, oil less scroll pump, dry scroll vacuum pump, oil free vortex vacuum pump, etc, is perfectly used in semiconductor equipment, photoelectric equipment, materials equipment, medical and food equipment, energy, aerospace, analyzing instruments and vacuum systems, with the advantages of compact structure, small size, light weight and low vibration, low noise, low energy consumption, suitable for global power supply, one button start, can be frequently started and stop between atmospheric pressure and vacuum.

Oil free scroll vacuum pumps are constructed with one or two fixed scrolls and orbiting scroll. The orbiting scroll is driven by motor through an eccentric shaft driven by electric motor. The movement of the orbiting scroll, meshed with the fixed scroll, forms successive crescent shaped volumes in the pump body. Gas which enters the pump through the inlet is compressed by the movement of the orbiting scroll and swept towards the center of the fixed scroll. The compressed gas enters the exhaust port near the center of the fixed scroll and is exhausted from the pump through the exhaust port as shown below:



0°(360°) gas suction



90° gas pressing



180° further compressing



270° discharging

LEADING MANUFACTURING TECHNOLOGY AND RELIABLE INFRASTRUCTURE



SERVICE CENTERS



PROFILE

GEOWELL VACUUM CO., LTD. is a high-tech enterprise in China dedicated to the manufacturing, and R&D of oil-free scroll vacuum pumps and compressors since 2002. Guided by our core value - achieving maximum efficiency and reliability through cutting-edge technology and continuous innovation - we have been a trusted partner to industries worldwide.

Global Leadership Certifications

Through persistent innovation and technological advancement, GEOWELL has become one of the world's leading manufacturers of oil-free scroll vacuum pumps, with more than 100 patents and proprietary technologies, CE, RoHS, EAC, ISO9001 certificates.

Worldwide Applications and Recognition

GEOWELL products are trusted by more than 100,000 of users worldwide and are widely applied in industries such as analytical instruments, semiconductors, scientific research, material process, medical equipment, food and pharmaceuticals, vacuum units, and more. Our solutions have proven performance in both demanding research environments and continuous industrial production.

Innovation and Expertise

GEOWELL has delivered premium-quality, energy-efficient, and dependable products, including oil-free scroll vacuum pumps, oil free ultrahigh vacuum units, oil-free scroll vacuum compressors, foreline filters, exhaust silencers with comprehensive system solutions and end-to-end after-sale service tailored to our customers' needs.

Global Service Network

With manufacturing excellence, competitive pricing, and dedicated technical support, GEOWELL has established service centers in Beijing, Shenzhen, Chendu and Shanghai in China, and overseas service centers in Russia, USA, UK, Malaysia, Japan and Taiwan, ensuring rapid response and localized technical support wherever needed.

Our Commitment

At GEOWELL, we believe that the integration of high performance and high reliability in both products and services will deliver maximum value to our customers and partners. With this belief, we remain fully committed to advancing oil-free vacuum technology and contributing our complete effort toward a more efficient, sustainable industrial future.

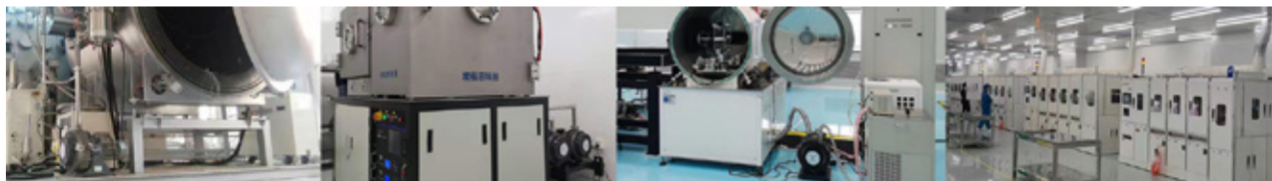
CERTIFICATES



FACILITIES



APPLICATIONS



GEOWELL VACUUM CO., LTD.

Add: 99A-18, Chungxin 1st Road, Hunnan District, Shenyang, China 110169

Tel: +86-24-83685362

Fax: +86-24-23783066

<https://www.geowellscroll.com> Email: service@geowellscroll.com

